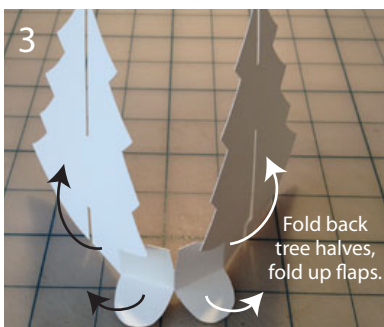


Make This Pop-Up Advent Card!

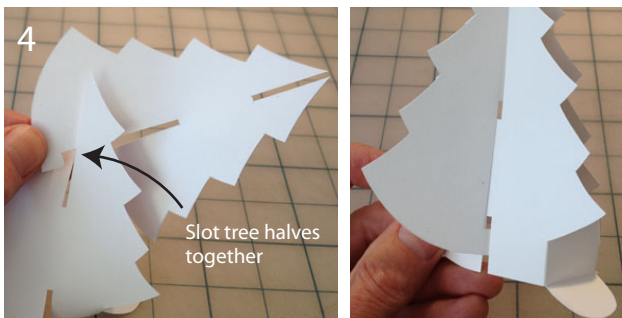


Print out Sheets A & B on to a stiff paper such as index paper or 80# cover, available from paper or office supply stores.

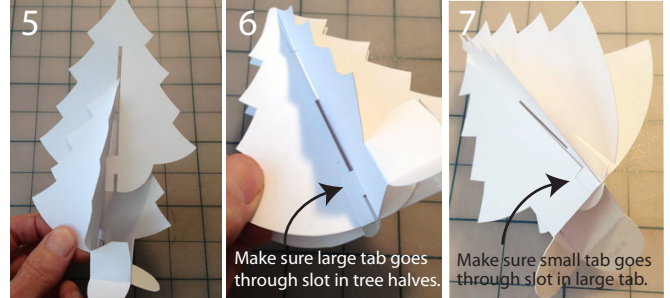
- 1 Loosely cut out the pieces from Sheets A and B.
- 2 Carefully cut out all pieces on the solid lines and score all the broken lines.
TIP: With scissors always cut into sharp corners NOT around them, this makes cutting much easier.
- 3 Begin with the double tree piece and fold the five score lines as shown below.



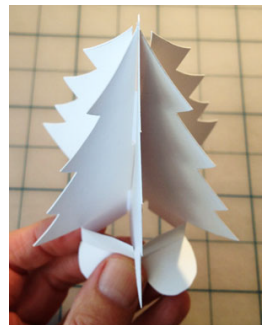
- 4 Twist slightly, and slot the tree halves together.



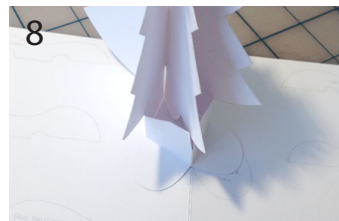
- 5-7 Slot the single tree piece over and between the two tree halves and poke the large tab through both slots in the bottom of the two tree halves. This is a little tricky so be patient!



- Important.** Make sure your tree looks like the one on the right and folds flat before moving on to the next step!



- 8-9 Add a little glue to Tab J of the tree and glue it where indicated on the card, repeat with Tab K.



- 10 Apply a little glue to where Flaps A will go.



- 11 Glue down Flaps A and repeat with all the other Flap groups. Gently fold card closed and check.



Congratulations!
Your Advent Card is finished!

