

## The Mausoleum of Halicarnassus:

- This structure was a tomb named after a ruler named Mausolus.
- The mausoleum was built between 353 and 350 BC.
- Halicarnassus was a city that is now located in present-day Turkey.

LEGEND

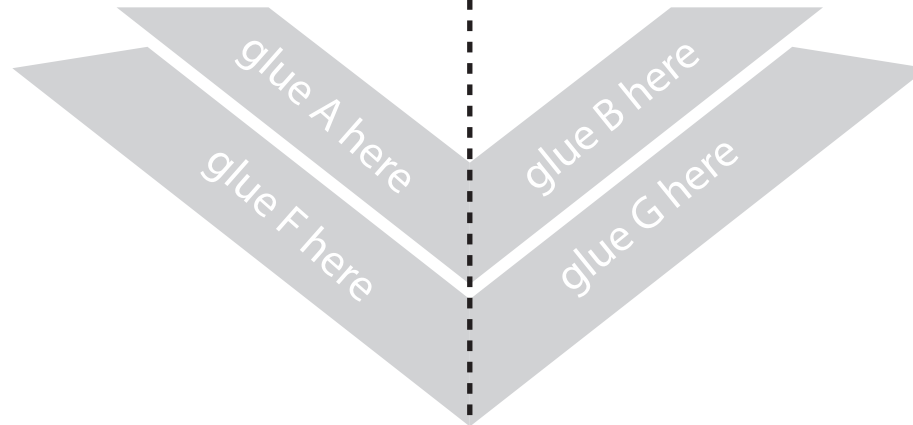
— Cut Line

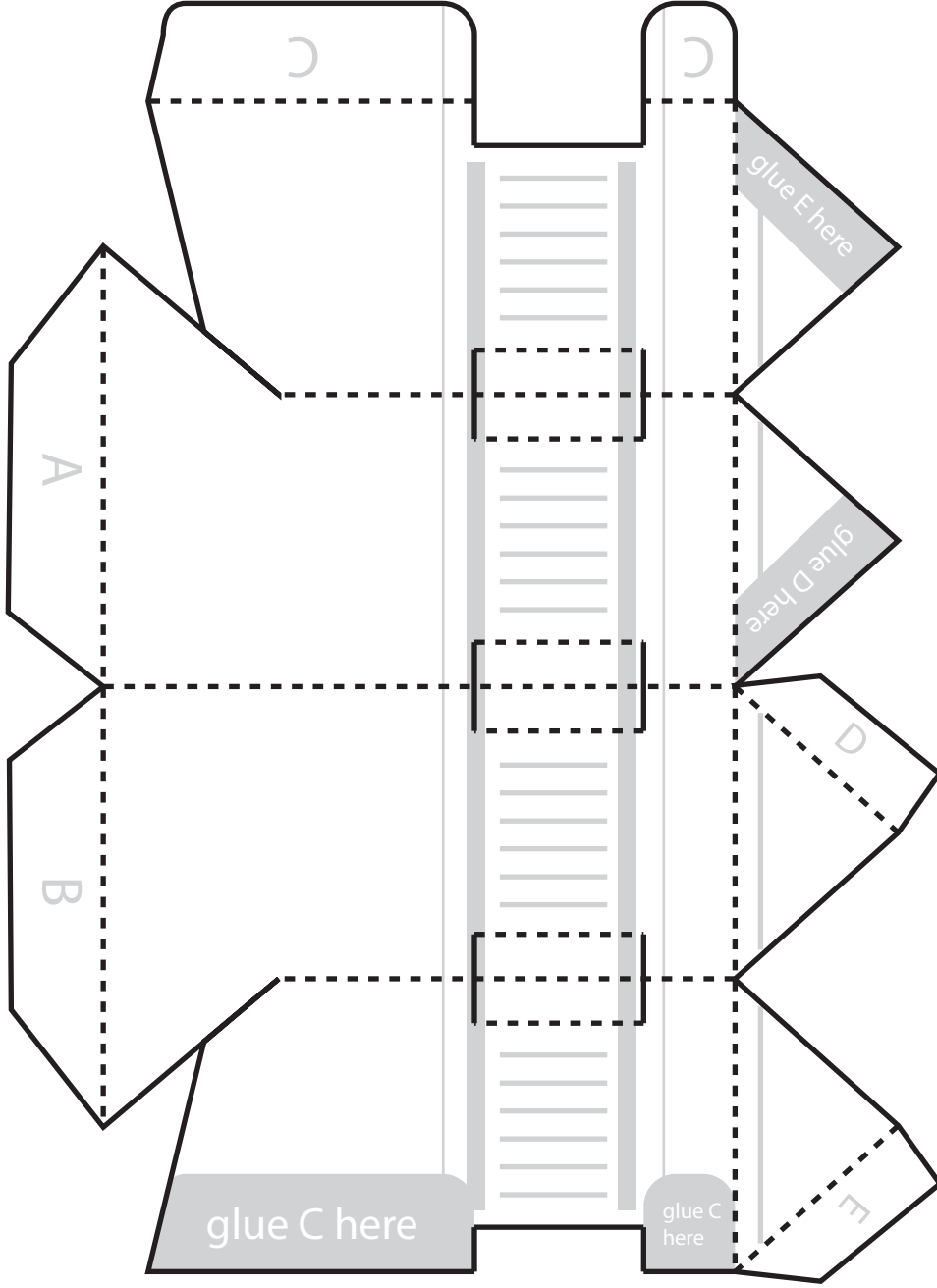


- - - Fold Line

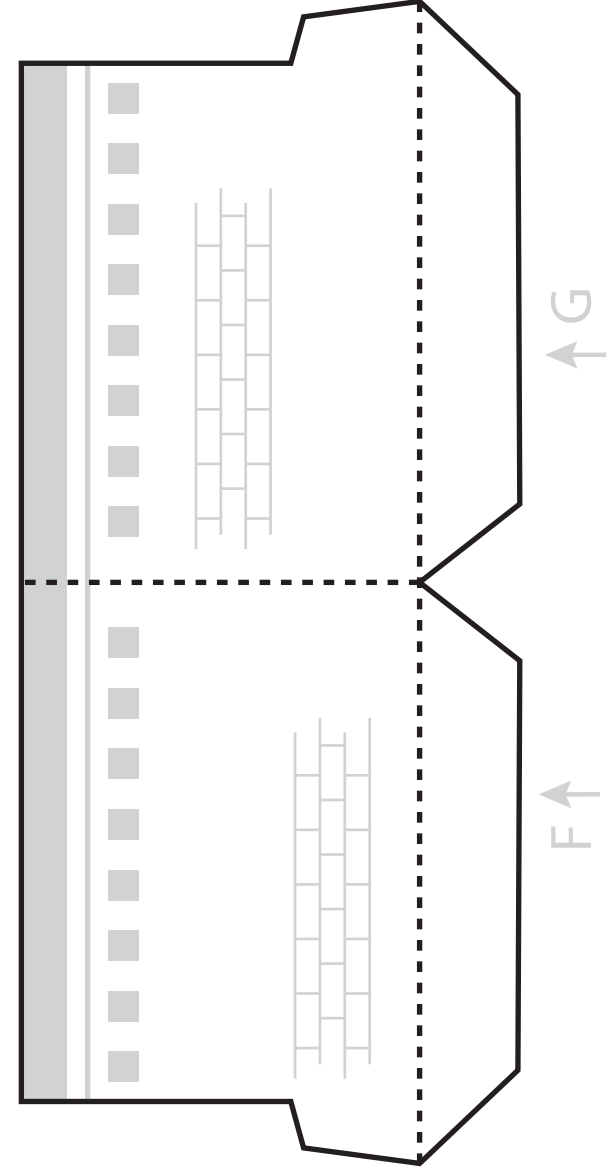


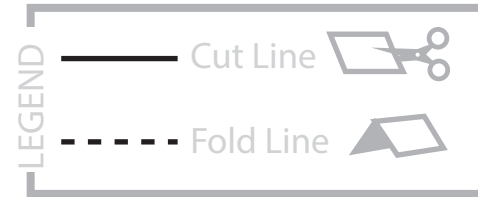
LEARNING UNIT:  
SEVEN WONDERS  
OF THE ANCIENT WORLD  
Mausoleum of  
Halicarnassus  
(Page 1 of 2)





LEARNING UNIT:  
 SEVEN WONDERS  
 OF THE ANCIENT WORLD  
 Mausoleum of  
 Halicarnassus  
 (Page 2 of 2)





LEARNING UNIT:  
SEVEN WONDERS  
OF THE ANCIENT WORLD  
Mausoleum of  
Halicarnassus Map

glue to Mausoleum Pop cover

