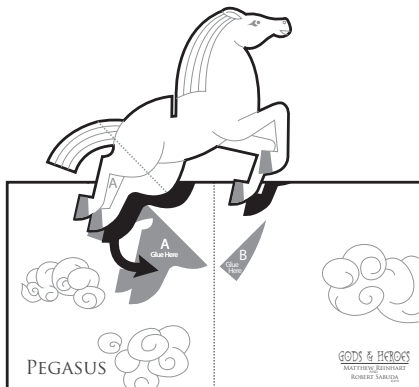
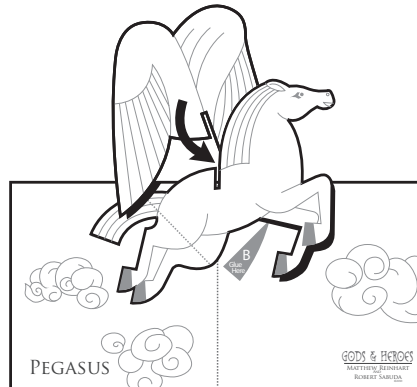


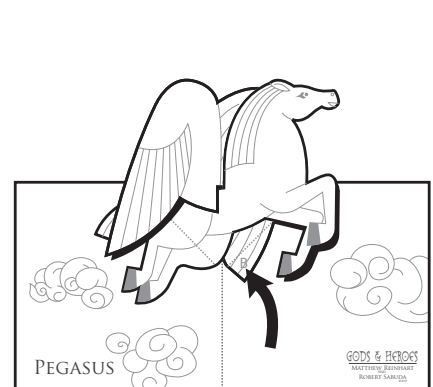
1. Cut out all the pieces along the thick black line and fold along the dotted lines.



2. Glue down tab 'A' onto the base page where it says "A Glue Here".

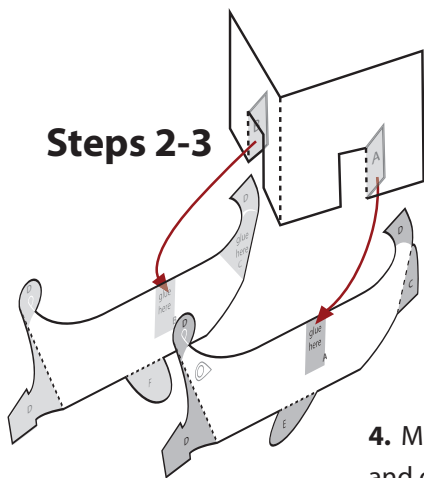


3. Slide the wing piece through the slot on the horse's back. (Make sure the left wing is in front.)

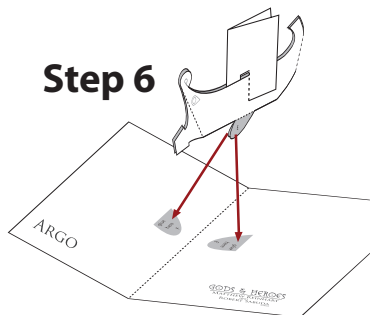


4. Glue down tab "B" onto the base page where it says "B Glue Here".

## Steps 2-3

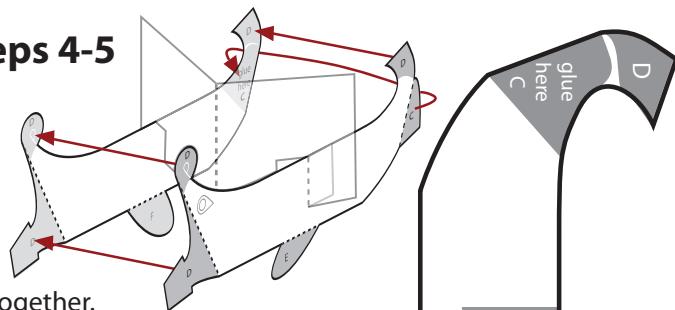


## Step 6

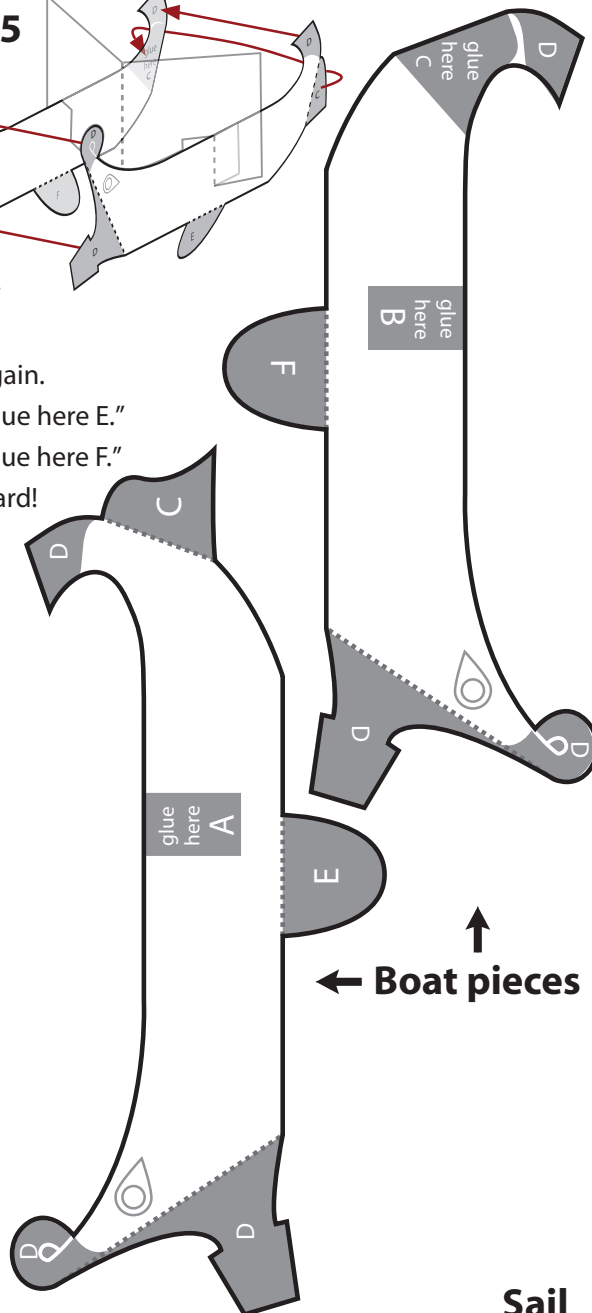
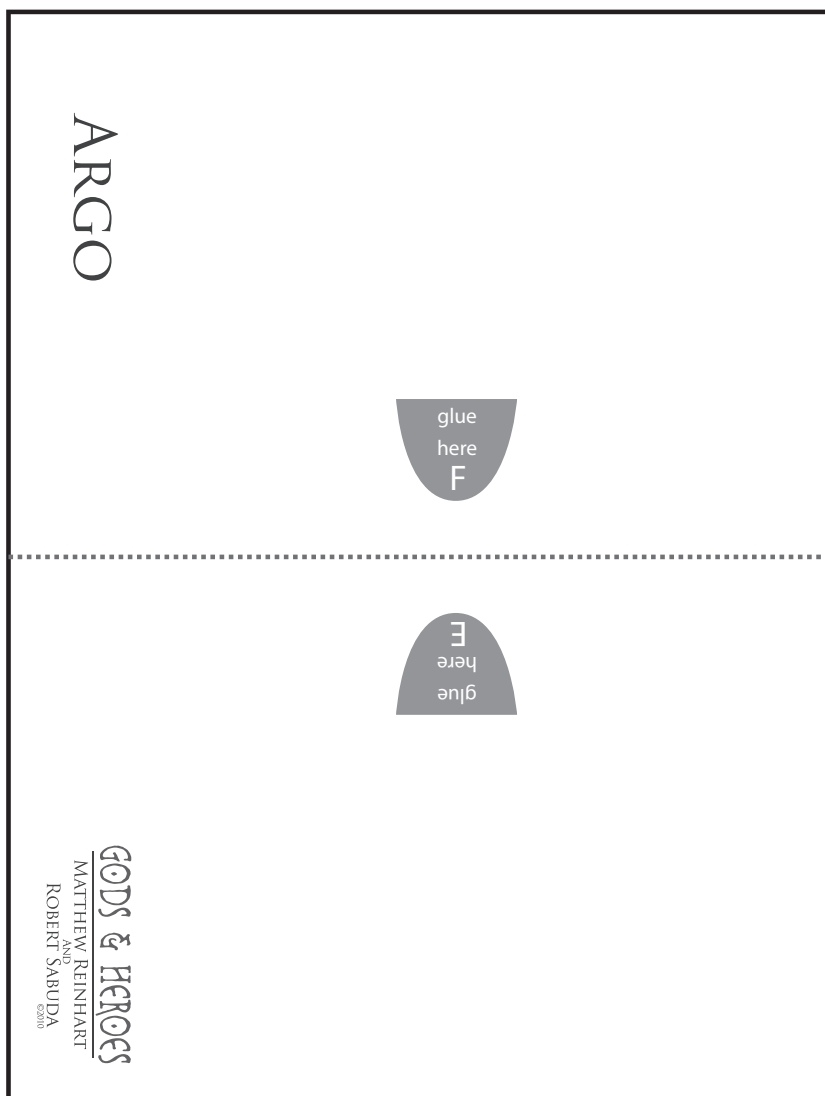


1. Print this page out on heavy paper, such as card stock. Score the dotted lines, then cut out all pieces along the thick black lines.
2. Take the Sail piece and mountain fold it in half.
3. Mountain fold tabs A and B inwards. Glue Tab A on the boat piece in the area marked "Glue here A." Glue Tab B on the other boat piece in the area marked "Glue here B."

## Steps 4-5



4. Mountain fold Tab C backwards and glue it on top of the area marked "Glue here C."
5. Glue all three areas marked "D" together.
6. Valley fold the card in half and open it again. Glue tab E face down in the area marked "glue here E." Glue tab F face down in the area marked "glue here F." Make sure glue is dry before opening the card!



← Boat pieces

Sail

