

The Small Dog's Silly House

When you flatten the house to the right and open the window you will see Mr. Cat.
 When you flatten the house to the left and open the window you will see the Small Dog.

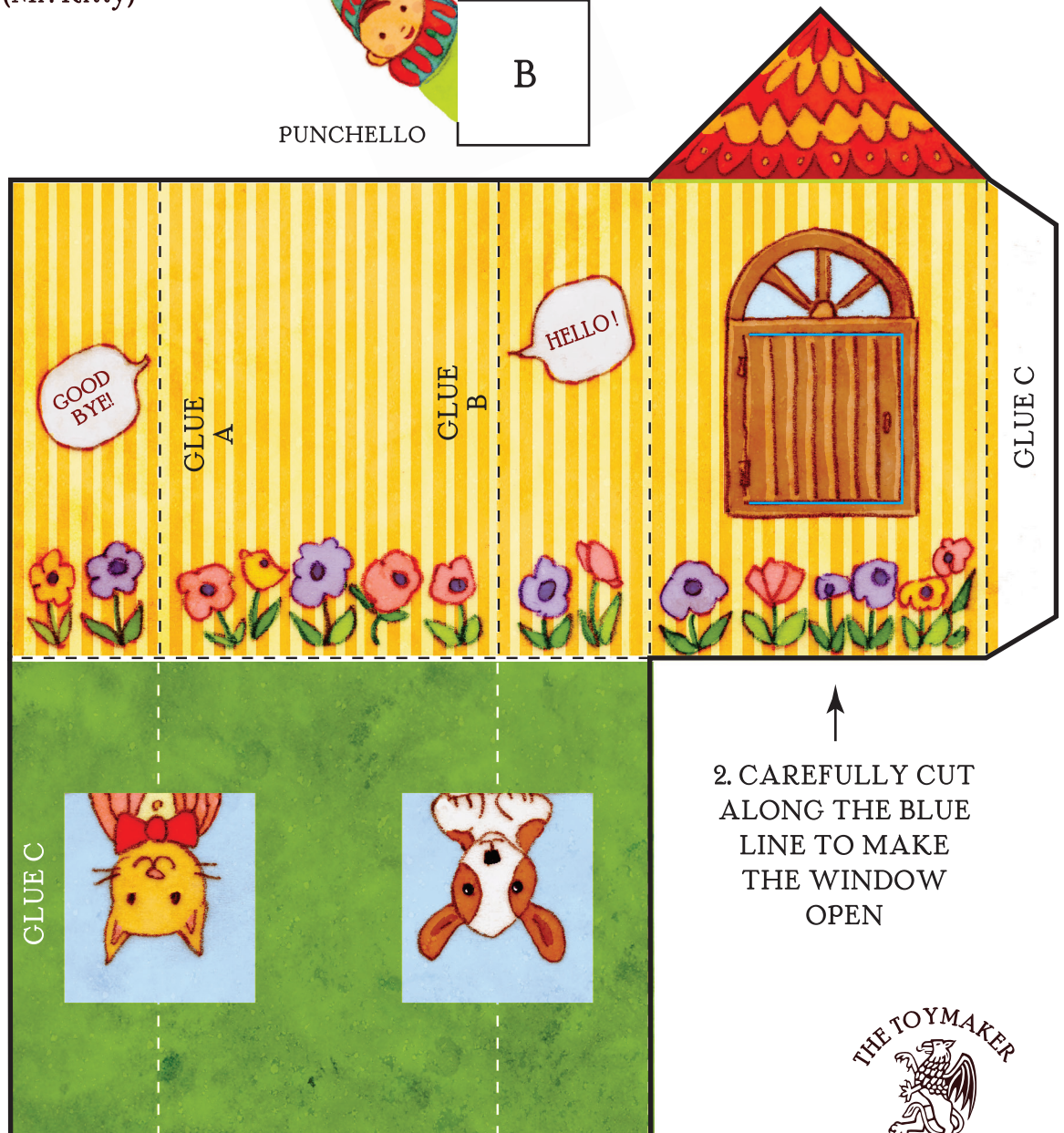
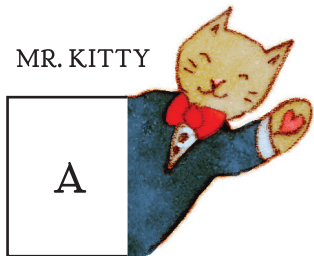
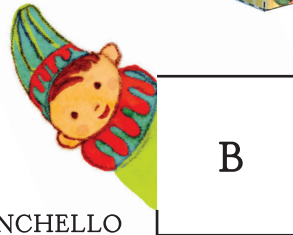
Cut out the piece and score the folds.

Fold the green flap up and glue to make the inside of the house.

Carefully cut along the blue line and fold back to make the window.

Glue Flap C to the inside back.

Glue A (Punchello) and B (Mr. Kitty) to the back.



1. FOLD BACK & GLUE FIRST

2. CAREFULLY CUT ALONG THE BLUE LINE TO MAKE THE WINDOW OPEN